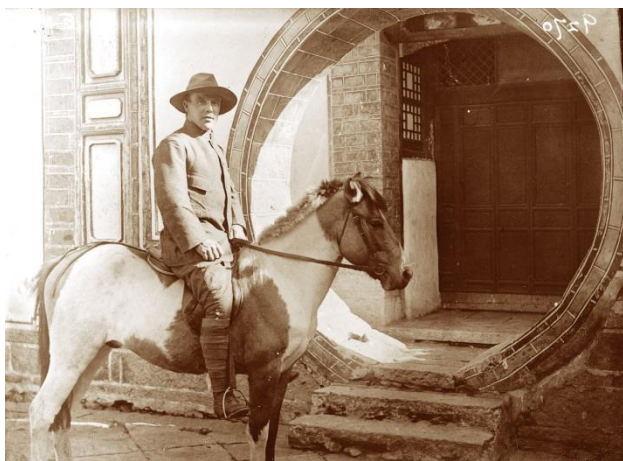


## The RBGE Archive

The Archive houses the Garden's historic records, including the Regius Keepers' correspondence and records of plants that have been grown in the Garden since its foundation.

The Archive also includes records of individuals and organisations that have a connection to the Garden, including plant collectors such as George Forrest, Reginald Farrer and Joseph Rock, and to the development of botanical science and horticulture.



The RBGE Archive is available for consultation by appointment only. Please email us at [archives@rbge.org.uk](mailto:archives@rbge.org.uk) to discuss your requirements and to book an appointment.

## Visit the RBGE Library & Archive

The Library is open to members of the public, either in person or by telephone or e-mail.

RBGE Library and Archive

20a Inverleith Row

Edinburgh

EH3 5LR

### FREE ADMISSION

### Opening Hours:

10.00 – 16.00, Monday – Friday

Group visits welcome by arrangement.

### Further Information

To find out more about the Library and Archive visit our website

<http://www.rbge.org.uk/science/library-and-archives>

Email: [library@rbge.org.uk](mailto:library@rbge.org.uk)

Telephone: 0131 248 2853

## Royal Botanic Garden Edinburgh

### Library & Archive



The Royal Botanic Garden Edinburgh was founded in 1670 as a physic garden. The Garden's Library is Scotland's national reference collection for specialist botanical and horticultural resources, and one of the country's largest research libraries.



The Library, along with the Herbarium, which now houses more than 3 million specimens, and the Living Collection supports a world-renowned centre for plant science and education.

<http://www.rbge.org.uk/science>

## The RBGE Library

The Library collection consists of more than 60,000 books, 4,000 periodical titles, a significant collection of illustrations, correspondence and other manuscript materials, UK and international nursery catalogues and maps.



The Library's Rare Book Collection includes more than 3,000 books, the earliest of which dates from the 15th century.

## Subject coverage

The Library's main role is to support the scientific and horticultural work that is undertaken at the Garden.

The primary focus of the collection is in systematic botany and floras, covering flowering plants, ferns, conifers, cryptogams and fungi.

Other subject areas covered include:

- Plant biodiversity and conservation
- Plant ecology
- Plant genetics
- Economic botany and ethnobotany
- Medicinal plants
- Amenity horticulture
- Garden history, design and landscaping
- Botanical illustration
- Plant collecting and exploration
- Botanical history and biography
- Plant pathology



## The Illustrations Collection

The Illustrations Collection provides an illustrated timeline of the development of botanical art from the late 17th century through to the present day, including original works by artists such as Lilian Snelling, John Nugent Fitch and Margaret Stones.



In addition to the original drawings and paintings, the Illustrations Collection includes teaching diagrams and posters, nature prints and architectural plans of the Garden. There is also a substantial photographic collection, including works by Anna Atkins, Joseph Rock, George Forrest and Robert Moyes Adam, and more than 60,000 photographic slides and glass-plate negatives.